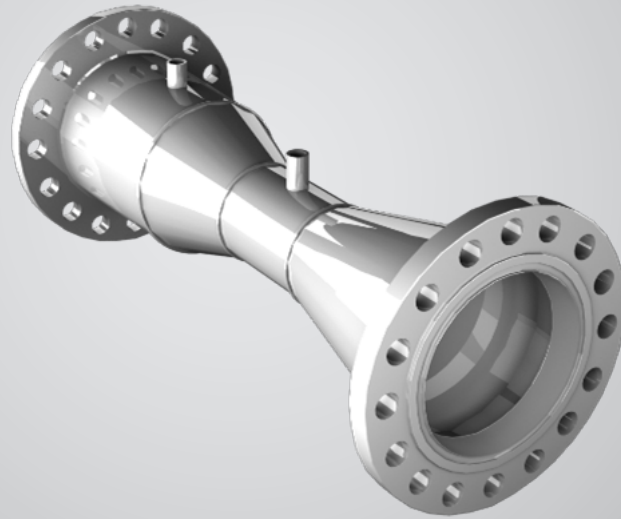




FLOW



Technology Solutions



Venturi Tube Tek-DP 1640A

1 FEATURES

- Accuracy $\leq \pm 0.5\%$ of the actual flow rate .
- Durable and optimized design, simple configuration.
- Suitable for high-pressure, high-velocity, non-viscous, erosive process media.
- Designs in accordance with ASME and ISO Standards.
- Durable and optimized design, simple configuration.
- Leakage-proof, spillage-proof assembly.
- Virtually maintenance- free and corrosion-resistant.
- Shortest laying pipe-length.
- Reduced piping cost.
- Highest pressure recovery or lowest permanent pressure loss.
- Repeatability 0.1 %.
- Available in all pipe sizes and a wide range of materials.

3 APPLICATIONS

- Water and sewage plants.
- Slurry flows in mining, chemical plants.
- Power Generation.
- Hydrocarbon, Liquid & Gas Process. LNG Trains.
- High Accuracy Custody Transfer, Fiscal and Allocation Flow Metering. Compressor Stations.
- Cryogenics.

CONTACT US

📍 796 Tek Drive, Crystal Lake, IL 60014 USA

☎ +1 847 857 6076

✉ Email: tektrol@tek-trol.com

🌐 www.tek-trol.com

2 SPECIFICATION

For Normal Liquids

Material	All standard materials available
Tap Connections	Two 1/2" NPT per side standard, Flanged, Socket Welded, Butt Welded, Valves
Venturi Tube Sizes	1" to 48", Custom size available on order, Flanged, Socket Welded, Butt Welded Valves
Turn Down Ratio	10:1 Standard
Beta Ratio	Typically, β 0.4 to 0.75
End Connection	#150 - #2500 RF/RTJ, SO/WN Flanges or Beveled ends
Operating Temperature	Standard at -20° to 100° F, optional -40° to 1200° F
Operating Position	Vertical, Horizontal (any orientations for liquids only)
Process products	Liquids, Liquid Hydrocarbons, Cryogenics
Assembly Type	Flange, Weld in, Insertion type

For Wet Gases

Material	All standard materials available (See model chart)
Tap Connections	Three 1/2" NPT standard, Flanged end, Socket welded, Butt welded, Valves
Venturi Tube Sizes	1" to 48", Custom size available on order , Flange, Weld in, Insertion type
Turn Down Ratio	10:1 Standard
Beta Ratio	Typically, β 0.4 to 0.75
End Connection	#150 - #2500 RF/RTJ, SO/WN Flanges or Beveled ends
Operating Temperature	Standard at -20° to 100° F, optional -40° to 1200° F
Operating Position	Vertical, Horizontal, Hydrocarbon Wet Gases, Steam, (other orientations available)
Process products	Natural Gases, Steam.
Assembly Type	Flange, Weld in, Insertion type