

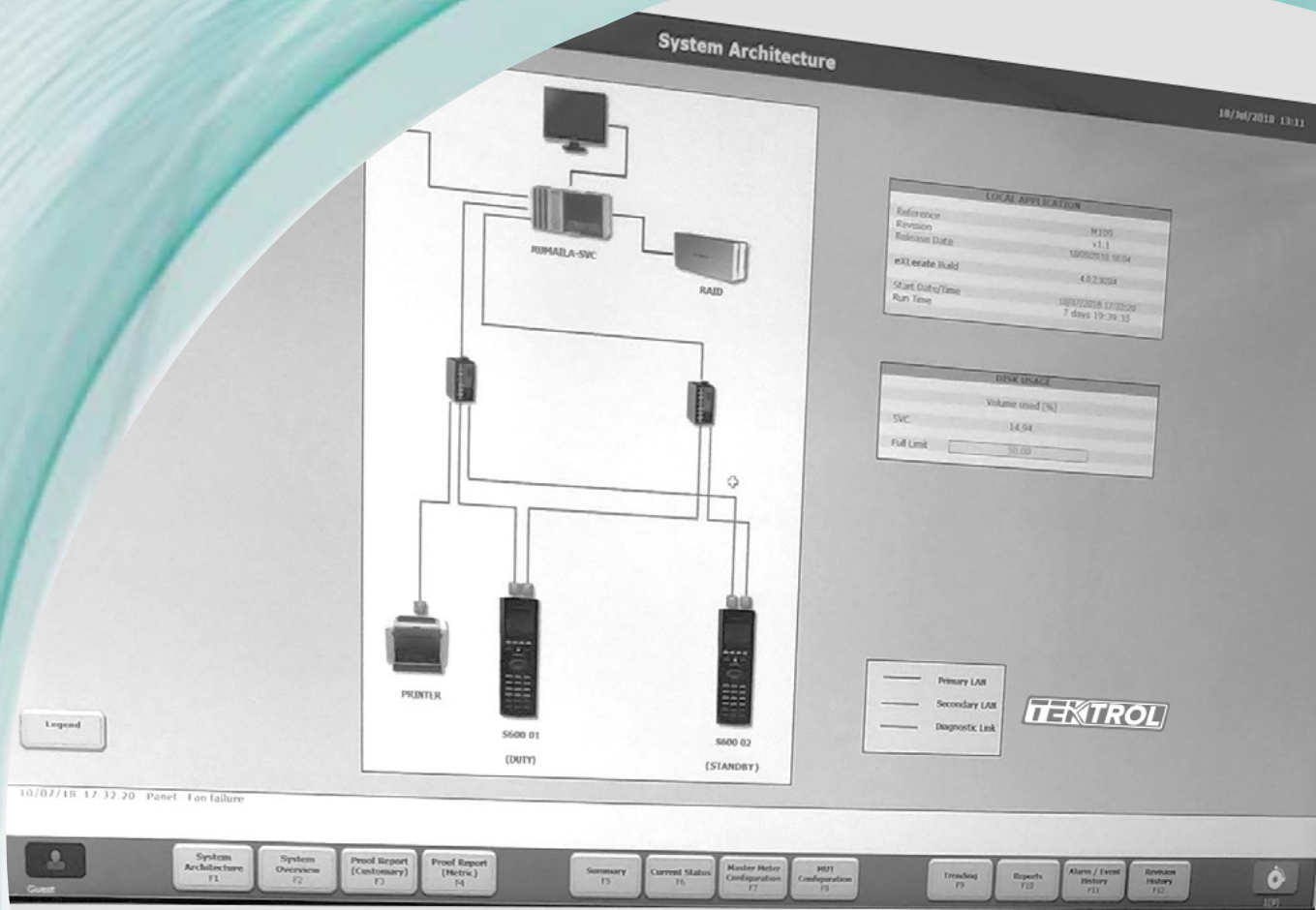
TEKVALSYS

— proMet —

ProMet Metering



SOLUTIONS



DESIGN | DELIVER | SUPPORT

PROVER COMPUTER 01
G000-253-FQI0001

PROVER COMPUTER 02
G000-253-FQI0002

www.tek-trol.com

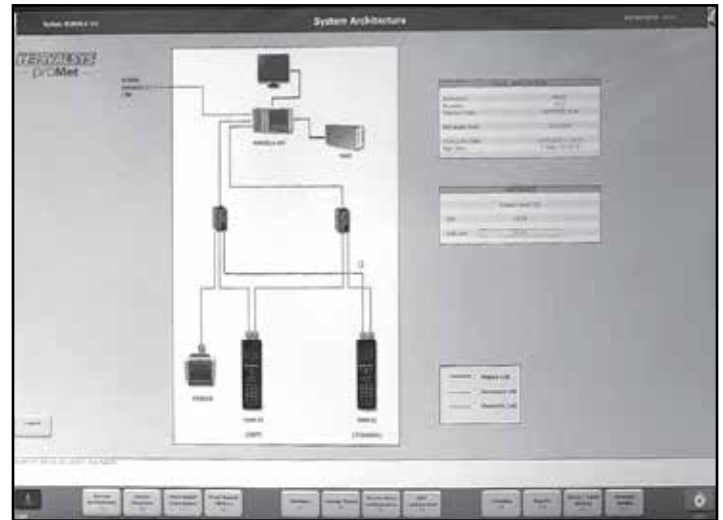
Flow | Level | Temperature | Pressure | Valves | Analyzers | Accessories | TekValSys

Introduction

ProMet Metering provides the complete measurement solution; an independent system design, build and installation; specialising in fiscal and custody transfer metering systems, to meet the most stringent of technical requirements.

- **Design**
Custom built solutions to meet your specification and budget.
- **Deliver**
Installed and commissioned by experienced ProMet engineers.
- **Support**
Lifetime system support and training.

Our metering supervisory computer systems are installed around the world and interface with numerous different flow computer technologies and control systems.



In today's cost challenging market there is a need to include more functionality in the supervisory system. To help users unlock the potential of their metering system and realise cost savings, ProMet is able to offer enhanced validation and verification features in their supervisory packages.

Design

ProMet recognises that very few systems are alike and no, one size doesn't fit all. We understand the importance of being independent so we offer our experience into the market to come up with the best solution that fits you technically and of course meets today's tight budget constraints.

We will design a system that exceeds your expectations and support it through the whole lifecycle, continuously monitoring performance and ensuring new upgrades and modifications are promptly highlighted and installed to guarantee optimum system performance.



In the design phase we can bring to the market:

- Unparalleled experience in the integration and supply of new, modified or upgraded metering systems with minimum measurement disruption.
- We have in excess of 30 years global experience of supplying over 200 systems in many regions of the world backed up with independent consultancy advice.
- In this 'lower for longer' environment, our design teams are fully aware of what the client needs coupled with current financial constraints.
- Cutting edge, best in industry design methodologies, to ensure you meet and exceed your regulatory and partner obligations.
- Our experienced staff can attend your site and provide you with a technical site survey detailing your requirement for modifications and upgrades to your existing system.

Deliver

We have experienced technical in-house and on-site teams coupled with continuous competence based training. We pride ourselves on getting it right first time with any construct, testing, installation and commissioning work.

- We have a dedicated manufacturing facility for single or multi bay measurement systems.
- In-house project management for every step of the manufacturing process coupled with continuous client contact throughout the build.
- Compliant and independently certified and vastly experienced site installation and commissioning teams with global mobility.
- Integration and interface testing services to ensure each project is completed to the relevant standards and specifications.
- Our own packaging service to ensure we meet and exceed shipping requirements.



Support

We recognise the importance of being there for our clients long after the installation and commissioning phases are complete; we are there for the long haul.

We treat our clients as partners and we work together over the lifetime of any system or upgrade to ensure we fully support any new available technologies, obsolescence, potential upgrades, needed modifications, system health checks. To back fill all of this we can offer 24/7 technical support.

The complete system lifecycle support.

Added to this we offer:

- Instructor led multi-disciplined classroom or site based training services from general metering to product or system unique training.
- Around the clock, around the year technical support services from a dedicated and fully manned helpdesk.
- A flexible range of support service contracts tailor made to suit your exact requirements.



Features

ProMet provides a flexible platform for all your metering supervisory needs and includes many standard features

- System architecture graphical mimic.
- Metering skid graphical mimic.
- Legend key for all mimics.
- Automated and on-demand reporting.
- Dual instrumentation comparison.
- Current alarm summary and filtering.
- Alarm and event historian.
- Easy interfacing with external systems.
- Flow computer web-browsing built in.
- Historical trending.
- Report archiving and recall.
- Remote access.



USM Diagnostics

Continuously monitor and check the performance of ultrasonic flow meters, without the need for third party software.

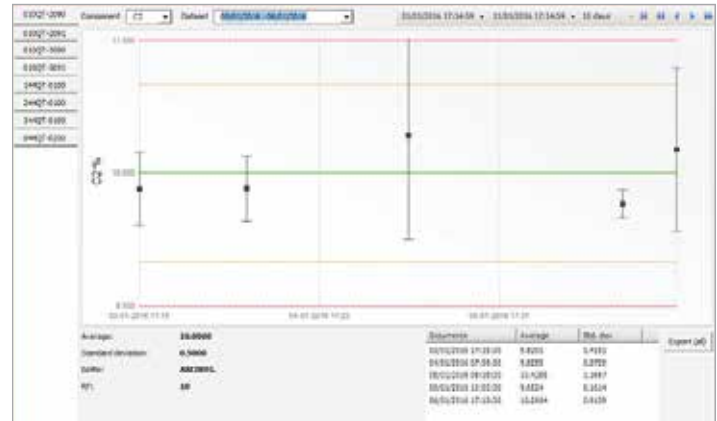
- Customisable thresholds for alarms.
- VOS Fingerprint comparison.
- AGA10 vs measured VOS.
- Measured vs calibrated VOS.
- Signal/noise ratio.
- Signal gain per path.



Gas Chromatograph Validation

Automatic verification of analyser results.

- Accuracy of measured analysis compared against known sample bottle composition.
- Configurable tolerance limit.
- Automated to highest extent with clear operator instructions.
- Control charting of each verification cycle.
- Automatic validation reports generated.



Flow Computer Calculation Verification

Verification of flow computer calculations powered by the TekValSys ProMet calculation engine.

- No need for additional software or hardware - verify calculations directly from the supervisory.
- Extensive library of calculations.
- Auditable records of previous results.

Transmitter Verification

Verify pressure and temperature transmitter readings.

- Transmitter reading verified against calibrated reference device.
- Configurable tolerance limit.
- Multiple measurement points.
- Reading error automatically calculated.
- "As Found" and "As Left" verifications captured.
- Fully auditable records with verification reports.

Electronic Log Book

Do away with paper records to record all metering information

- Store all metering events and occurrences electronically.
- Fully auditable.
- Powerful filtering capabilities and report generation.



Other Features

System Health Indication

- A single high-level interactive map showing the health of the systems.
- Bespoke rules determine the health conditions.
- Can be defined during the implementation stage.

Metering System Overview

- A graphical P&I D style overview mimic of each metering system.
- Typically showing totals.
- Flow rates.
- Primary process variables.
- Valve positions.

CBM

- Condition based monitoring for Differential Pressure (DP) meters.
- Ultrasonic meters.
- Coriolis meters.
- Gas chromatographs.

Maintenance

- Maintenance activity scheduling.
- Displays showing the status.
- Scheduled maintenance activities.

Live Uncertainty

- For each stream and system.
- Showing graphically the mass, volume and energy, uncertainty and exposure for each system.
- Where relevant data is available, the uncertainty of each of the components is combined.
- To give the stream system uncertainties.

Documentation

- Provides simple access to system documentation.
- Includes P&IDs, FDS, data sheets and system drawings.

Inventory

- Graphical representation.
- For all instruments, meters and equipment utilised within the metering systems.
- Data can be presented company wide, region based.
- Can relate just to a single system or per manufacturer.

Compliance

- Graphical representation.
- For all instruments, meters and equipment utilised within the metering systems.
- Data can be presented company wide, region based.
- Can relate just to a single system or per manufacturer.

Communications

- Modbus, DNP3.
- OPC DA interfaces.
- Obtain metering data.
- From flow computers, MSC, SCA DAsystems, DCS, Plant Historians.
- Gateway located at remote sites.
- Obtain metering data from various sources.
- Securely and efficiently transmit it to the server.
- Email.
- SMS notification of specific status conditions.



Customer Service & Support



TEKTROL LLC reserves the right to change the design, and/or materials of its products without notice. The contents of this publication are the property of TECTROL LLC and cannot be reproduced by any other party without written permission. All rights reserved. Copyright © 2020 TECTROL LLC
TEKTROL LLC
TEKTROL LLC
DOC # TEK/PO/CAT/2012/18/ProMet/00



www.tek-trol.com

Tek-Trol LLC

796 Tek Drive Crystal Lake,
IL 60014, USA



+1 847-857-6076



tektrol@tek-trol.com



www.tek-trol.com

Tek-Trol is a fully owned subsidiary of TEKMATIION LLC. We offer our customers a comprehensive range of products and solutions for process, power and oil & gas industries. Tek-Trol provides process measurement and control products for Flow, Level, Temperature & Pressure measurement, Control valves & Analyzer systems. We are present in 15 locations globally and are known for our knowledge, innovative solutions, reliable products and global presence.