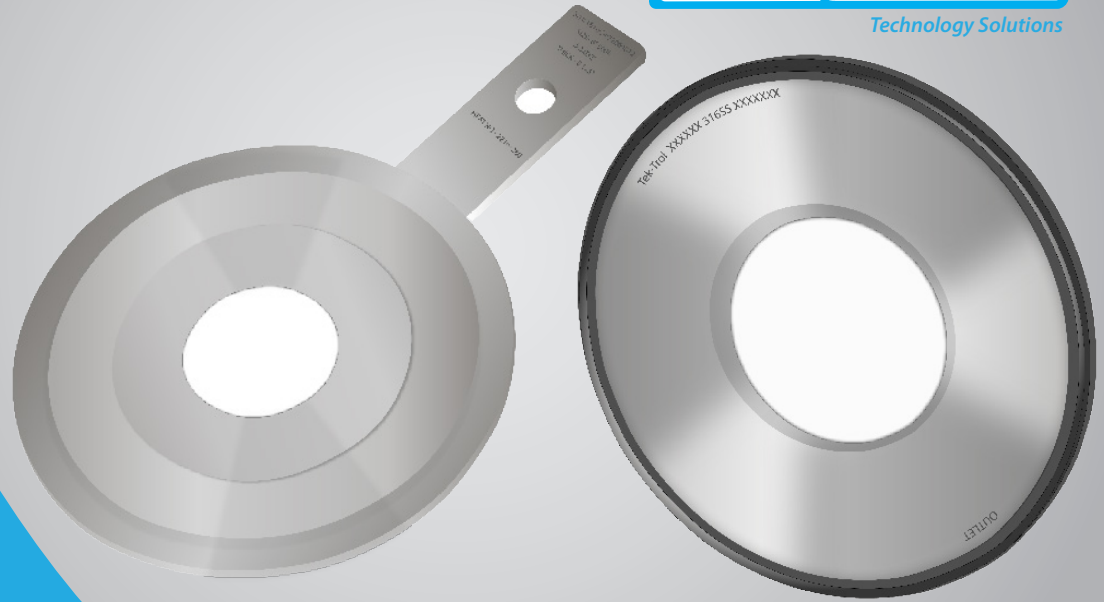




FLOW



Technology Solutions



## Orifice Plate

# Tek-DP 1610E

### 1 FEATURES

- Max. operating temperature and pressure determined by material and flange.
- Suitable for liquid, gases and steam flow measurement.
- Accuracy  $\leq \pm 0.5\%$  of actual flow rate.
- Repeatability of measurement of 0.1 %.
- Field repairable.
- Special trim available.
- Available sizes from 2 to 96 inches diameter
- Quick and easy plate replacement with low down-time.

### 3 APPLICATIONS

- Power generation
- Oil production and refining
- Water treatment and distribution
- Gas processing and transmission
- Chemical and petrochemical industries

## CONTACT US

796 Tek Drive, Crystal Lake, IL 60014 USA

+1 847-857-6076

Email: [tektrol@tek-trol.com](mailto:tektrol@tek-trol.com)

[www.tek-trol.com](http://www.tek-trol.com)

## DESCRIPTION

Tek-Trol Orifice plates have been supplied to serve the oil and gas industry since 1975. We work hard to ensure that our orifice plates are the very best quality available using traceable materials referenced to 68°F, stamped and supplied with certification based on beta ratio/ geometry with correct plate, bevel and edge thickness as required by our customers.

### 2 SPECIFICATION

<b>Available Types</b>	- Paddle Type Orifice Plate - Universal Type Orifice Plate - DVS Bonded Orifice Plate
<b>Plate material</b>	Stainless Steels (SS) : SS304, SS316, SS316L-as standard. Optional : Hastelloy-C, Monel, Duplex, PVC, PTFE coated.
<b>Orifice Bore Dimensions</b>	In accordance with AGA-3 or ISO-5167 standards where applicable
<b>Tab Plate</b>	Same material as the orifice plate (welded to the plate). Tab Plate integral to the Orifice Plate (i.e. without any welding) can also be offered as special case - Consult Factory
<b>Vent / Drain</b>	Vent or Drain/Weep holes are provided as per customer's requirement. (Diameter of the vent or drain holes are as per ISA RP 3.2.)
<b>Flange Union</b>	Weld neck, Slip on, Threaded, Socket welded with RF /RTJ facing. Orifice flanges in accordance with ANSI B16.36 with minimum flange rating of 300# for sizes up to 8".
<b>Pressure Tapping's</b>	- Corner tappings for sizes upto 1-1/2" diameter - Flangetaps from 2" to 16" diameter - D-D/2 taps higher sizes. (if applicable)
<b>Gasket</b>	- Non CAF,SS spiral wound,SS spiral wound + Grafoil®, SS spiral wound + PTFE.Other materials available on request. - For RTJ flanges , the plate is fixed on the plate holder. The plate holder is in Soft Iron material & acts as a gasket. (Stainless Steel available)
<b>Studs / Nuts</b>	ASTM A193 Gr.B7/A-194 Gr.2H as standard, Other material on request.
<b>Jack Screw</b>	ASTM A193 Gr.B7/A-194 Gr.2H as standard, Other material on request.
<b>Manufacturing Standards</b>	AGA., ISA., ASME., API Note: consult factory for Special custom designs.
<b>SIZE</b>	Up to 96 inches in diameter.
<b>Plate Thickness w</b>	0.125 in to .5 in (3.2 mm to 12.7 mm) Other (consult factory)