

ALL DIMENSIONS ARE IN INCHES / MM

3.2"

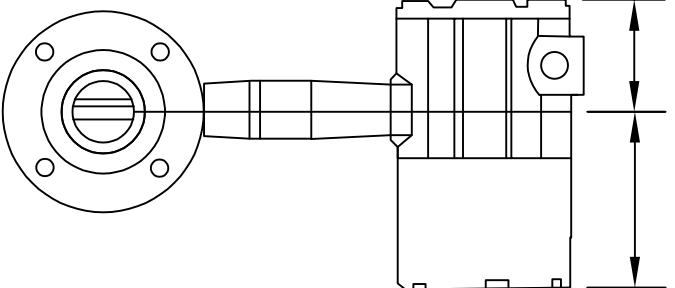
[80mm]

5.3"

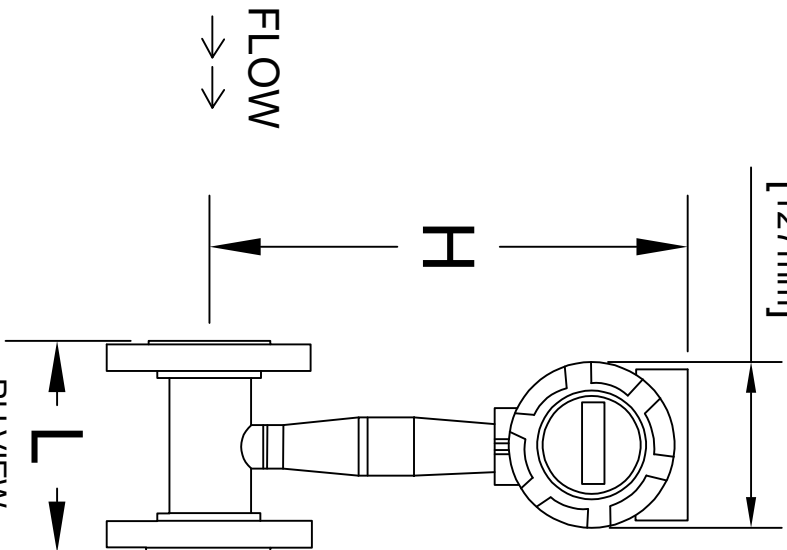
[134mm]

5.0"

[127mm]



FRONT VIEW



RH VIEW



FOR REFERENCE USE ONLY

Flow Meter Nominal Size In.(mm)	(L) In.(mm)	(L) (ANSI 900) In.(mm)	(H) In.(mm)	(WEIGHT)			
				(ANSI 150) (PN 6)	(ANSI 300) (PN 40)	(ANSI 600) (PN 63)	(ANSI 900) (PN 160)
3/4"(20)X1/2"(15)	7.9" (200)	8.4" (213)	13.5"(343)	13 Lb(5.9 Kg)	14.6 Lb(6.6 Kg)	15.6 Lb(7.1 Kg)	20.6 lb(9.3kg)
1"(25)X1/2"(15)	7.9" (200)	8.4" (213)	13.5"(343)	13 Lb(5.9 Kg)	16.3 Lb(7.4 Kg)	16.4 Lb(7.5 Kg)	22.7 lb(10.3 Kg)
1-1/2"(40)X1"(25)	7.9" (200)	11.1" (282)	13.8"(351)	13.4 Lb(6.1 Kg)	23.3 Lb(10.6 Kg)	24.6 Lb(11.2 Kg)	36.3 lb(16.5 Kg)
2"(50)X1-1/2"(40)	7.9" (200)	12.5" (318)	14.0"(356)	16.3 Lb(7.4 Kg)	26.8 Lb(12.2Kg)	33.2 Lb(15.1Kg)	58.1 lb(26.4 Kg)
3"(80)X2"(50)	7.9" (200)	14.1" (357)	14.6"(371)	21.2 Lb(9.6 Kg)	41.0 Lb(18.6 Kg)	56.1 Lb(25.5 Kg)	73.7 lb(33.4Kg)
4"(100)X3"(80)	9.84" (250)	15.3" (389)	15.1"(384)	33 Lb(15.0 Kg)	66.8 Lb(30.3 Kg)	96.0 Lb(43.6 Kg)	116.1 lb(52.7 Kg)
6"(150)X4"(100)	11.81" (300)	17.8" (452)	16.2"(411)	45.8 Lb(20.8 Kg)	106.3 Lb(48.2 Kg)	194.3 Lb(136 Kg)	220.5 lb(100 Kg)
8"(200)X6"(150)	11.81" (300)	20.1" (511)	17.2"(437)	68.3 Lb(31.0 Kg)	168.4 Lb(76.5Kg)	299.0 Lb(138.2Kg)	365.7 lb(165.9 Kg)
10"(250)X8"(200)	15.0" (381)	23.3" (592)	18.2"(462)	188.3 Lb(85.5 Kg)	262.3 Lb(119.1 Kg)	462.3 Lb(209.9 Kg)	562.8 lb(255.3Kg)
12"(300)X10"(250)	17.7" (450)	29.7" (754)	19.2"(488)	298.6 Lb(135.6 Kg)	402.6 Lb(182.8 Kg)	606.6 Lb(275.4 Kg)	792.3 lb(359.4 Kg)

**Tek-Trol LLC**  
7967 Tek Drive,  
Crystal Lake, IL 60014, USA

REV. A	DATE 28.FEB.25	INITIAL STAGE	PREP'D BY AD	CHD. BY SD	APP'D. BY UN	END USER :
REV.	DATE	DESCRIPTION	BY	BY	BY	

P.O. NO. :-

DRAWING NO. :-

PROJECT :-

CUSTOMER :-

DOCUMENT TITLE :  
TEK-VOR 1300XP  
EXPLOSION PROOF VORTEX  
FLOWMETER(REDUCED BORE)

PROJECTION :

SHEET NO. : 1 OF 1

SCALE : 1 : 1

DATED :-

REV : A